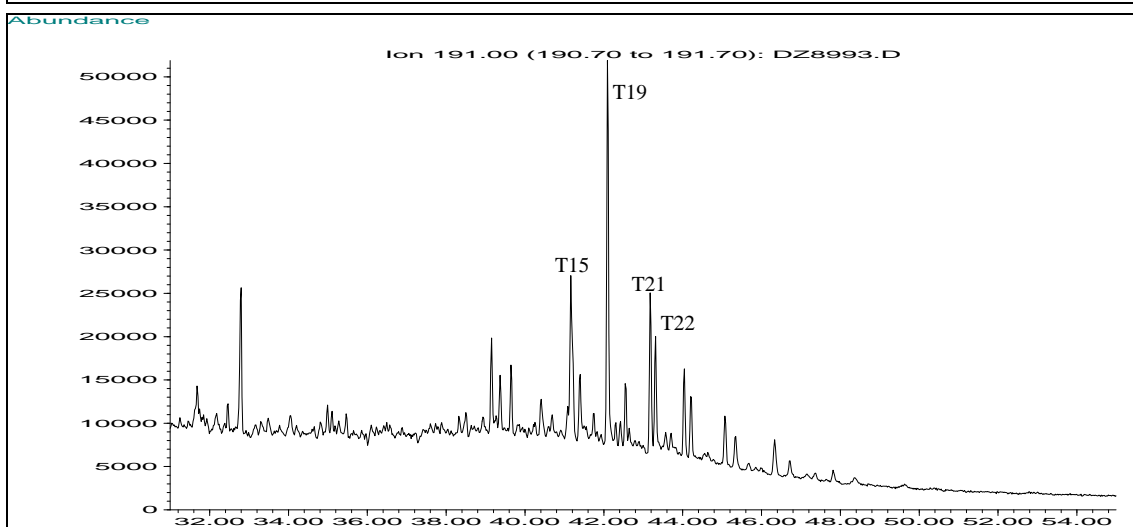
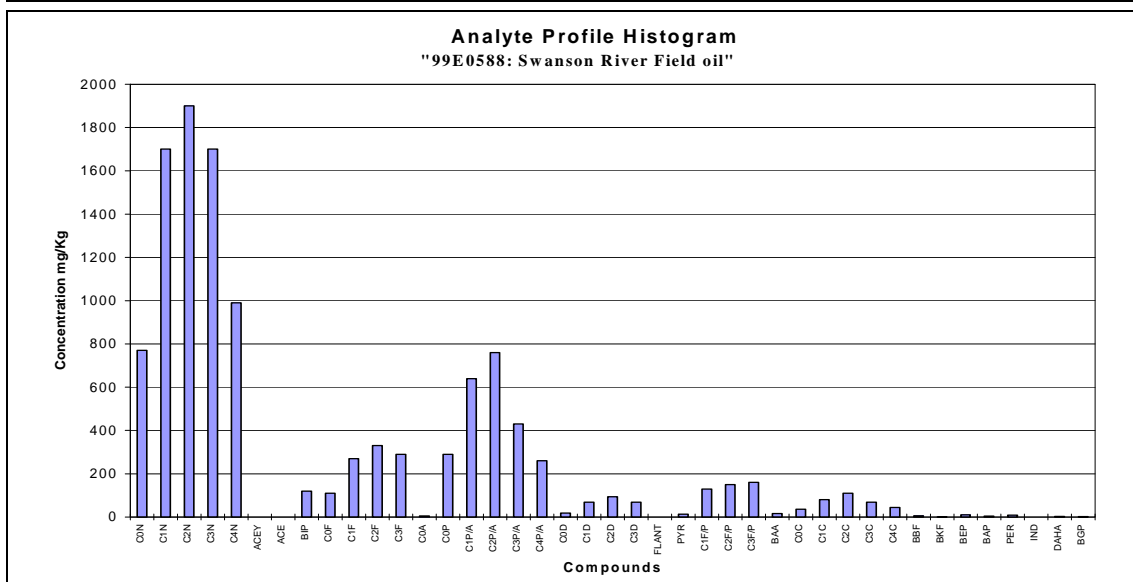
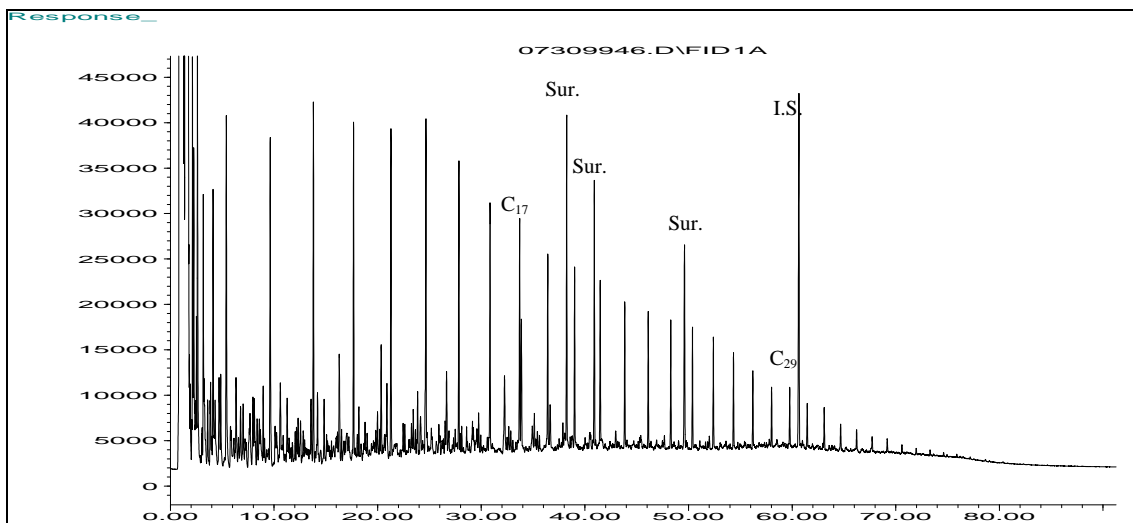


**Figure 3-1: Cook Inlet Crude Oil Source Sample Results: GC/FID chromatogram (top), PAH distribution plot (middle), Triterpane extracted ion chromatogram (bottom).**



**Figure 3-2: Swanson River Field Oil Source Sample Results: GC/FID chromatogram (top), PAH distribution plot (middle), Triterpane extracted ion chromatogram (bottom).**

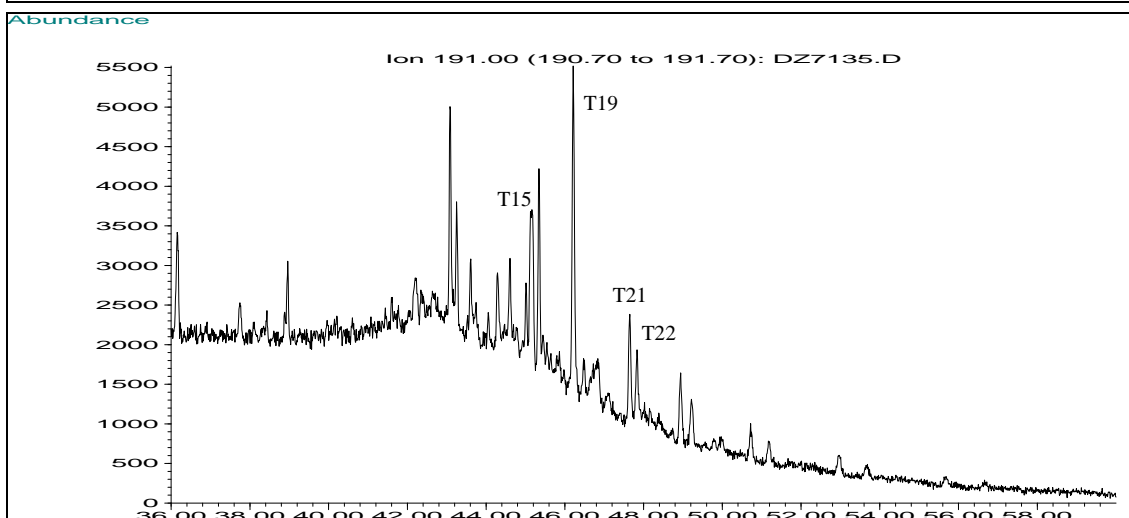
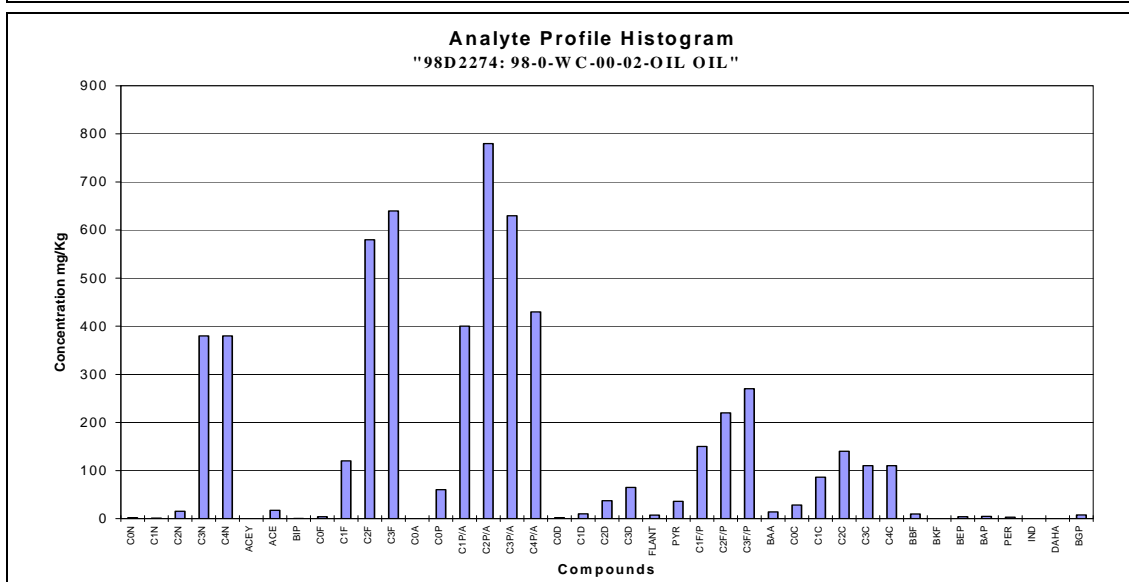
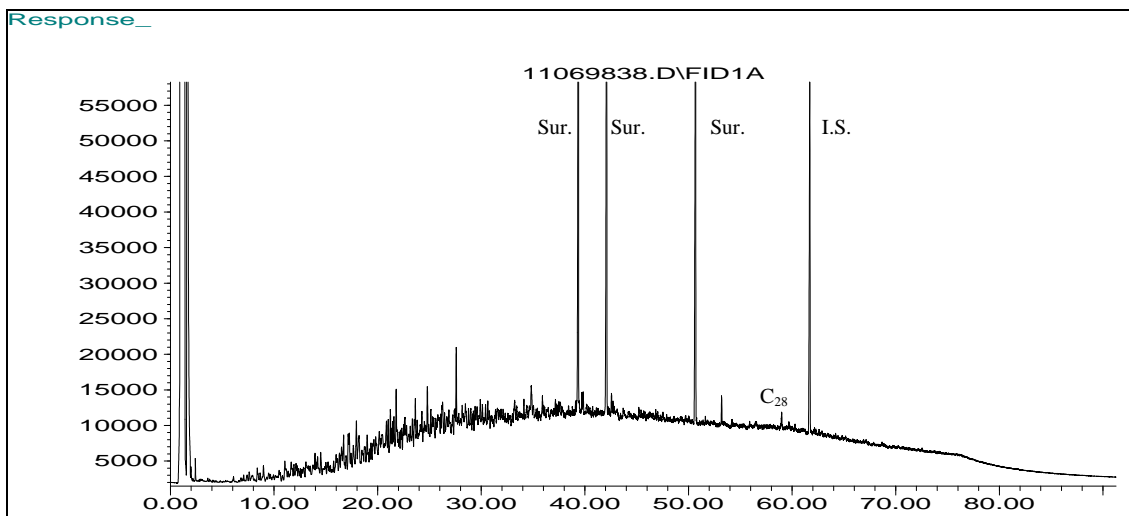
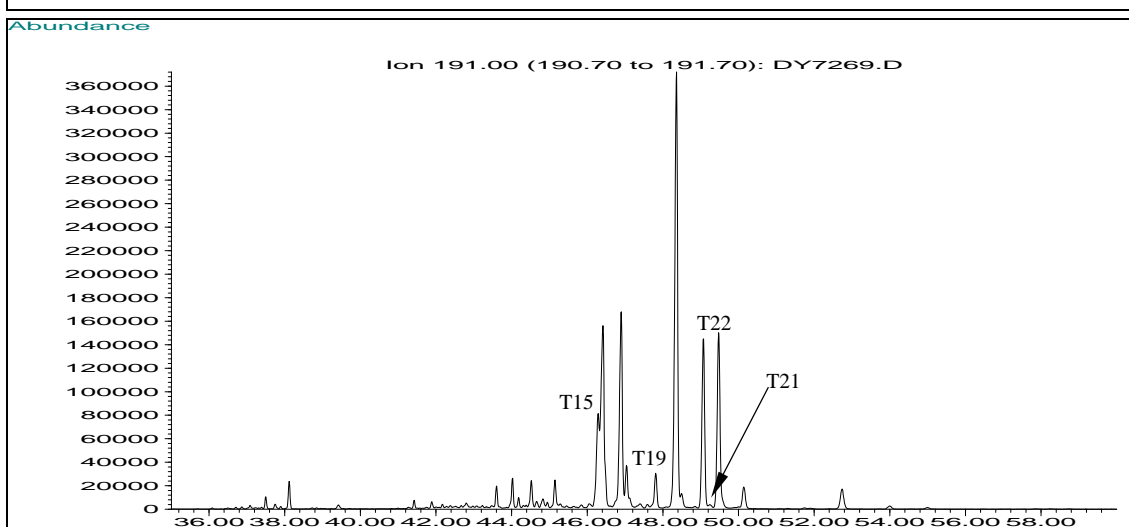
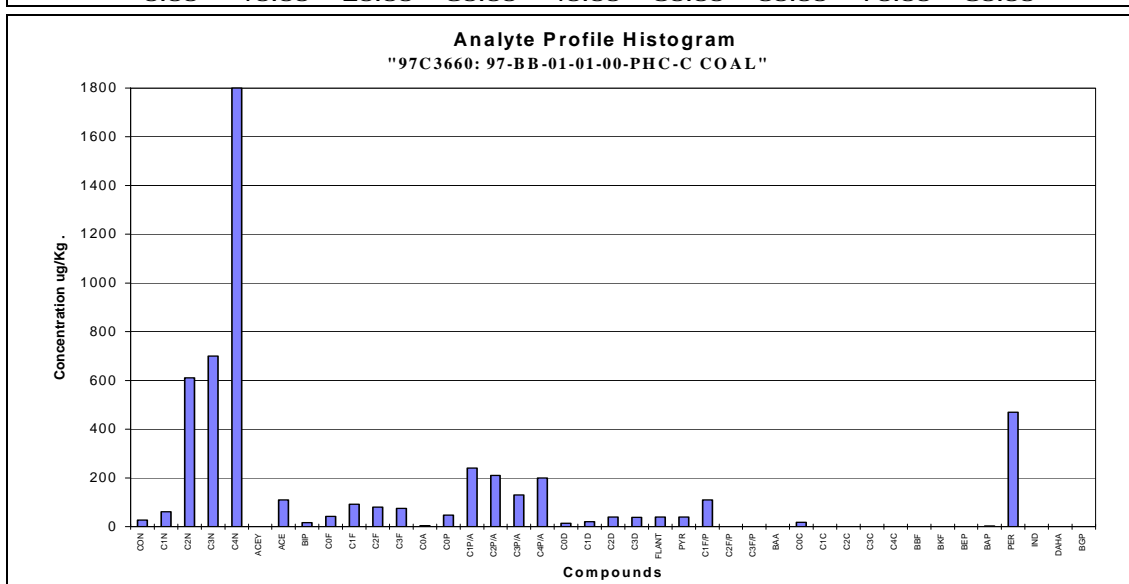
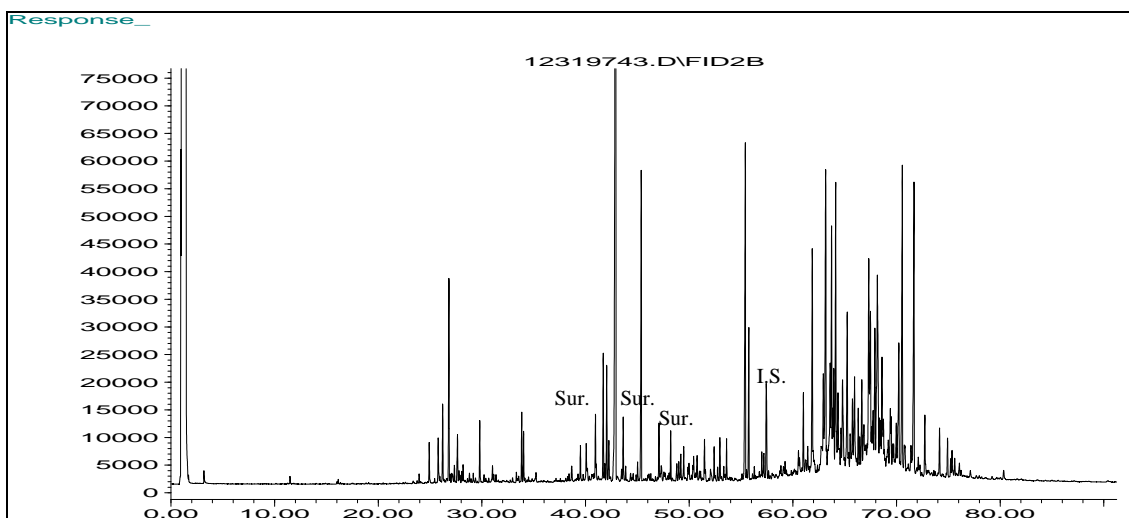
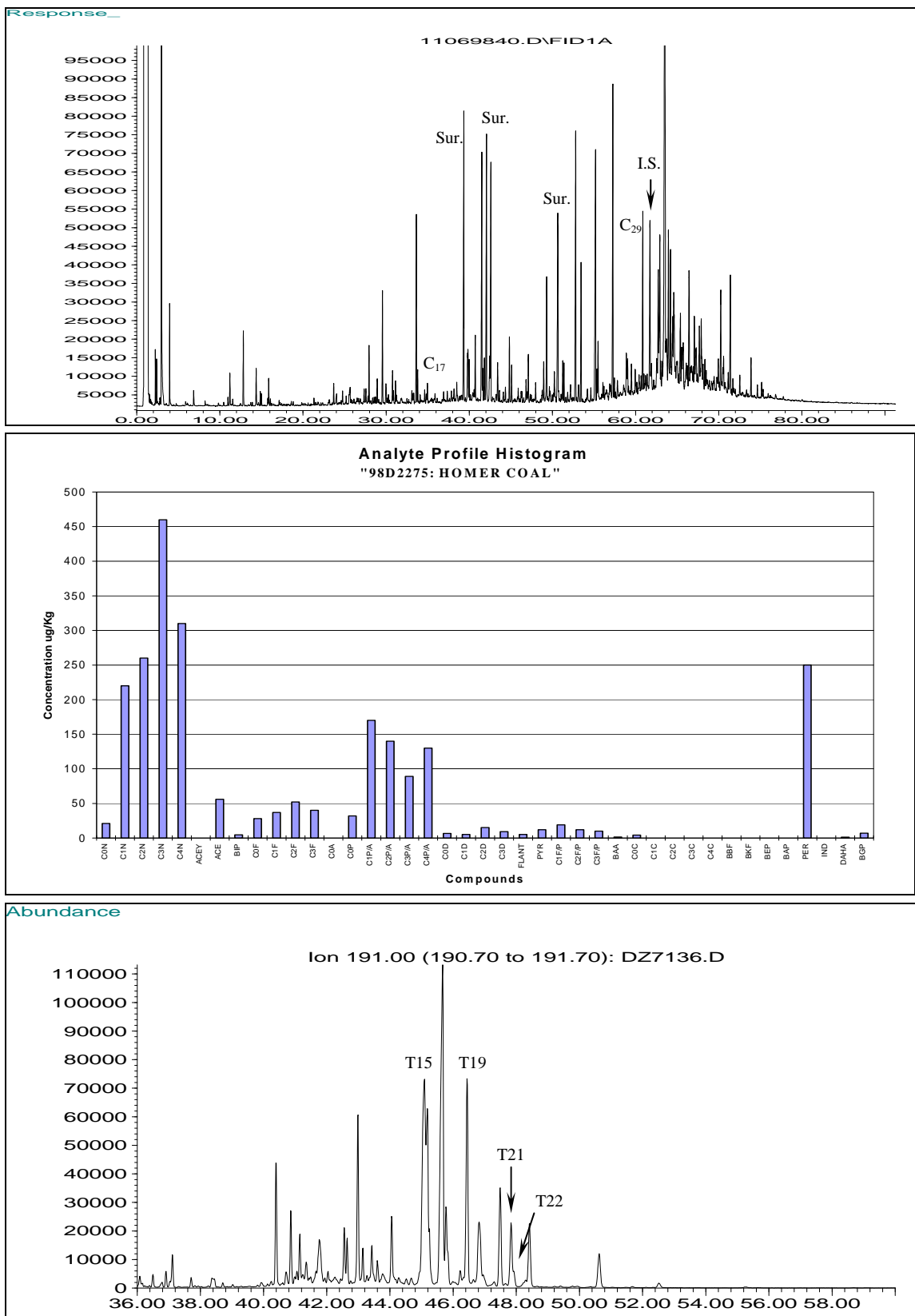


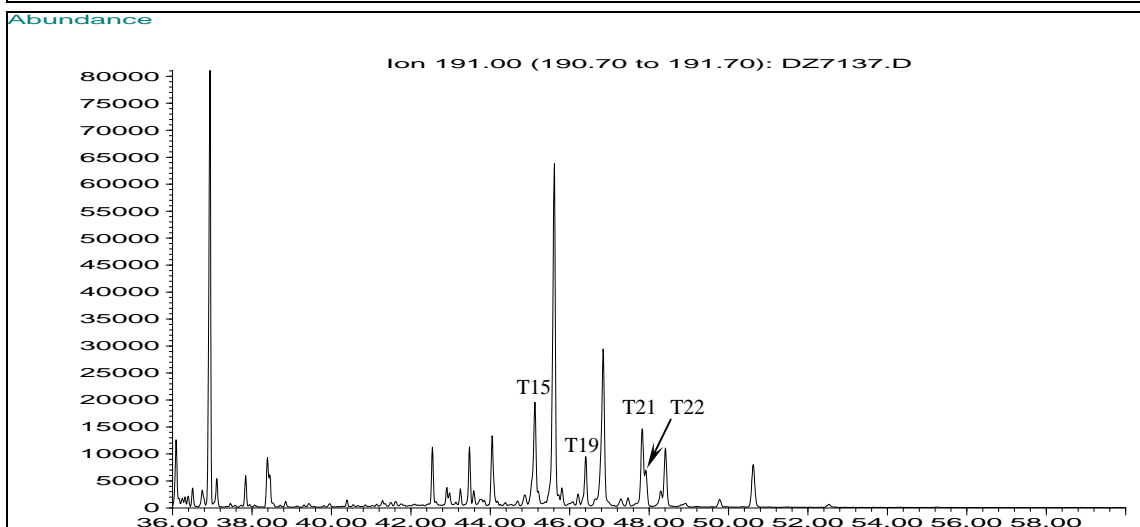
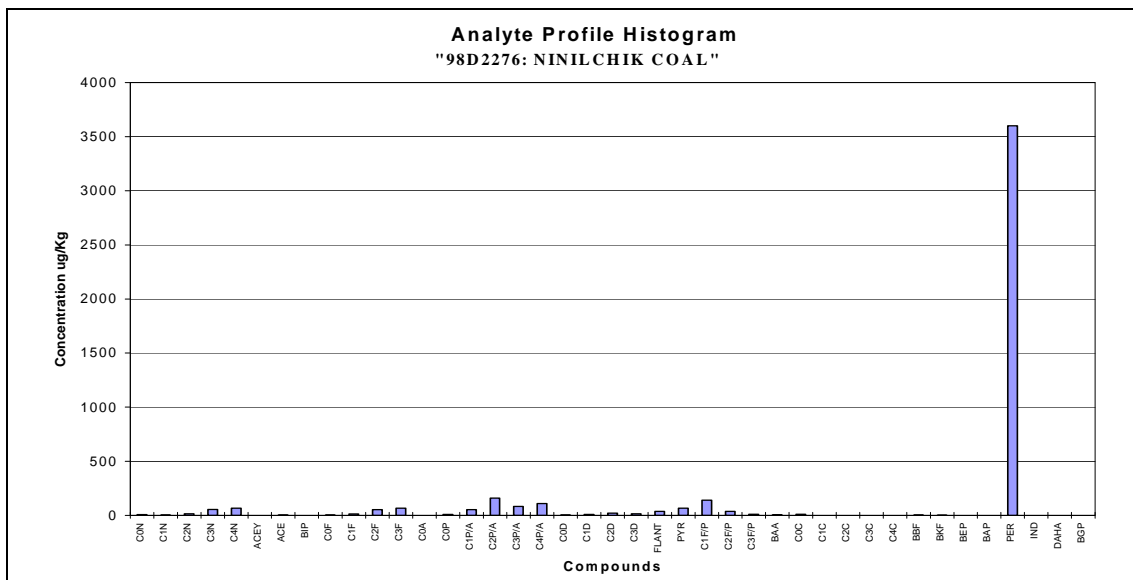
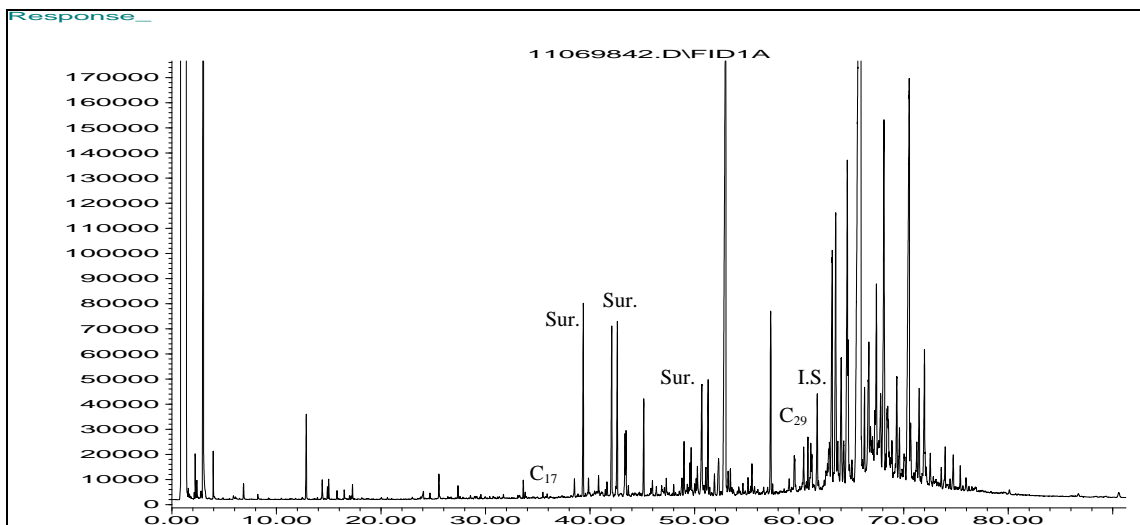
Figure 3-3: Well Creek Oil Seep Source Sample Results: GC/FID chromatogram (top), PAH distribution plot (middle), Triterpane extracted ion chromatogram (bottom).



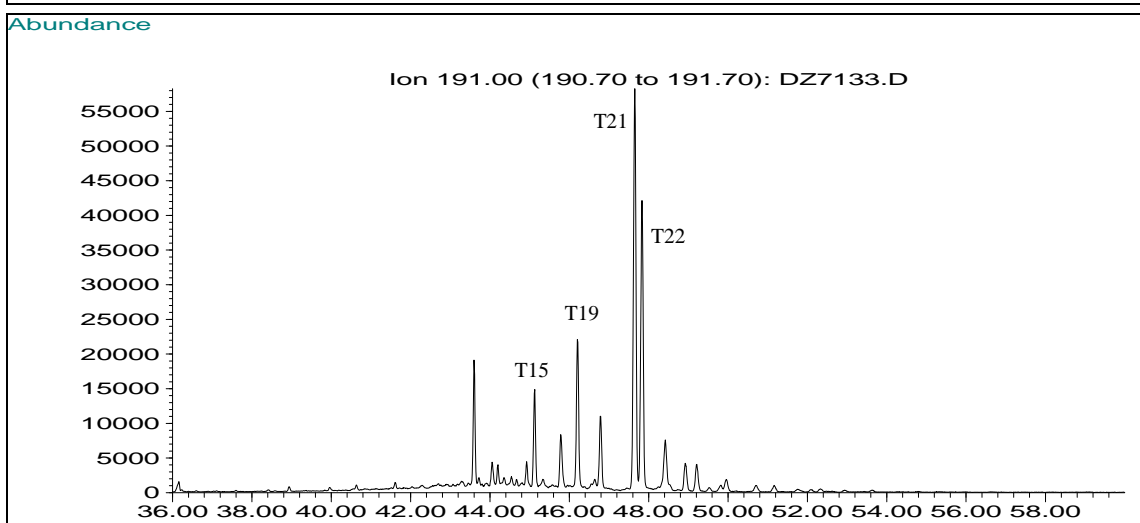
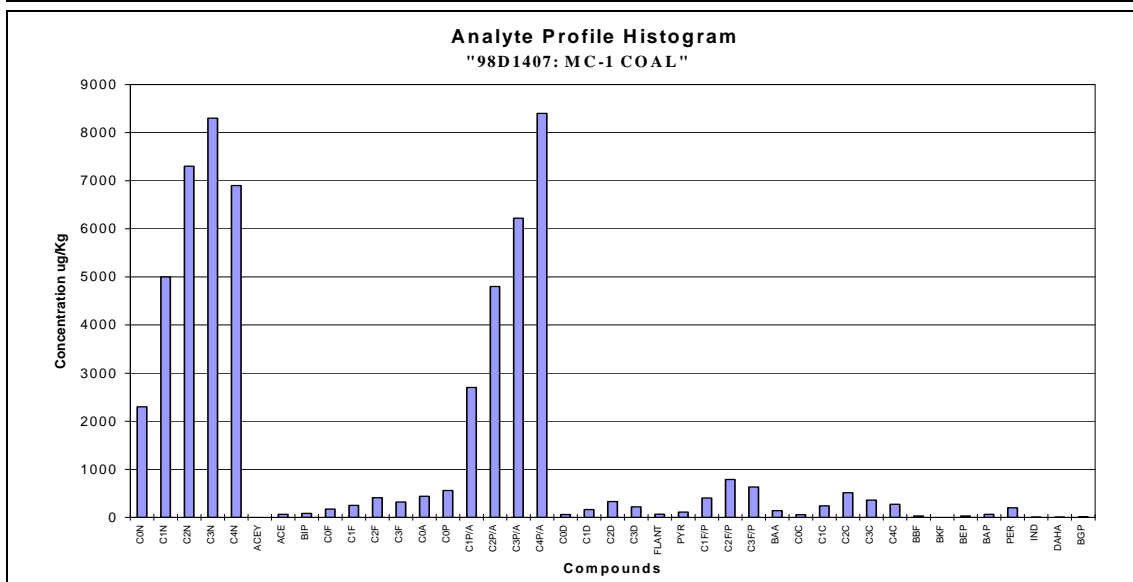
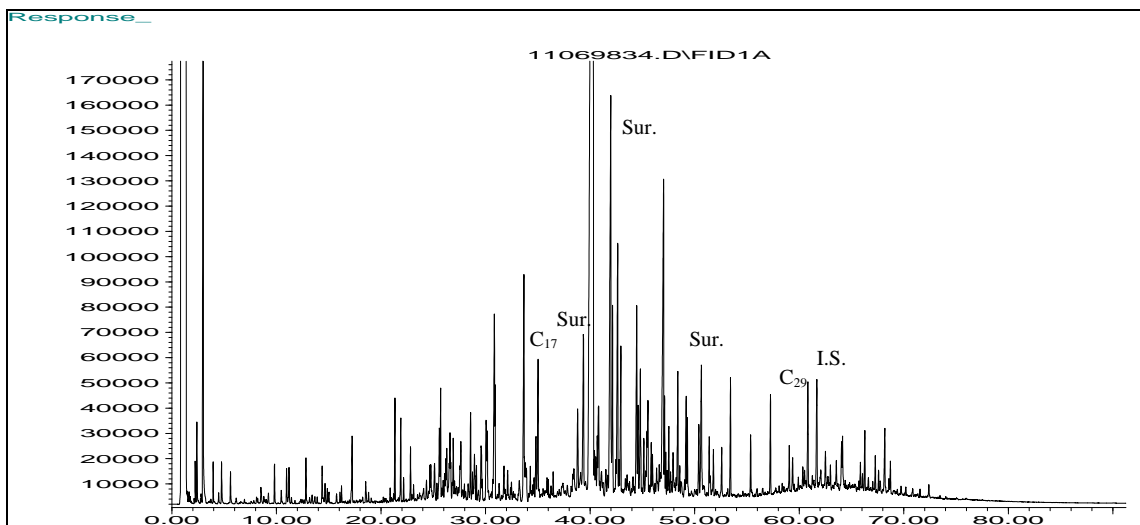
**Figure 3-4: Homer Spit Coal Source Sample Results: GC/FID chromatogram (top), PAH distribution plot (middle), Triterpane extracted ion chromatogram (bottom).**



**Figure 3-5: Homer Coal Bay Source Sample Results: GC/FID chromatogram (top), PAH distribution plot (middle), Triterpane extracted ion chromatogram (bottom).**



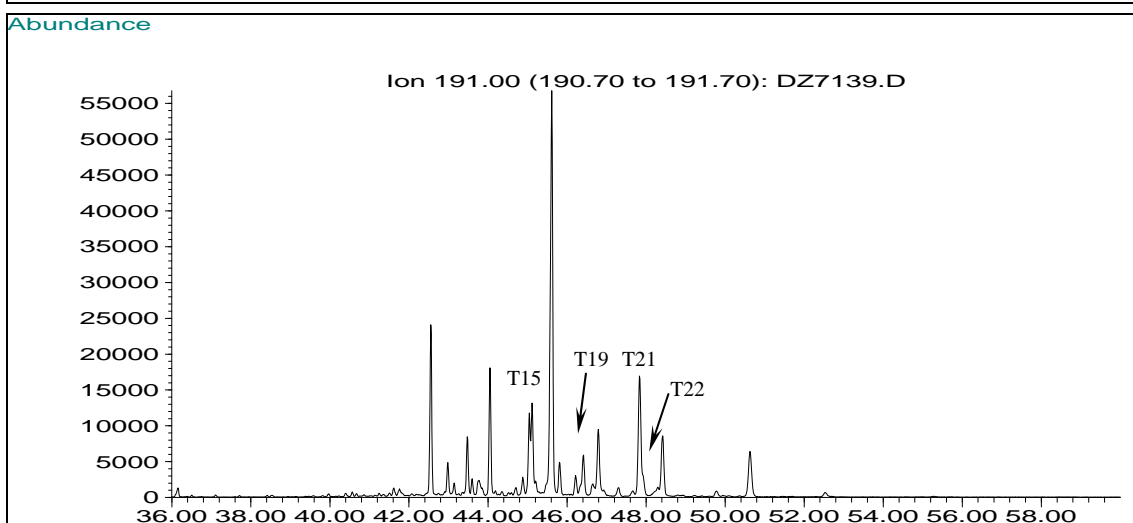
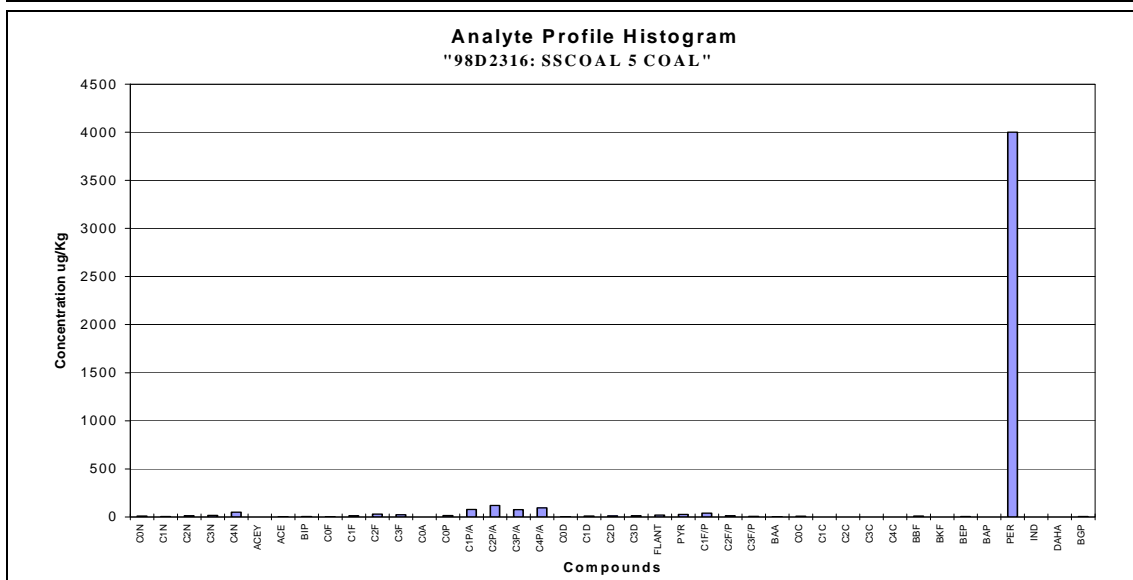
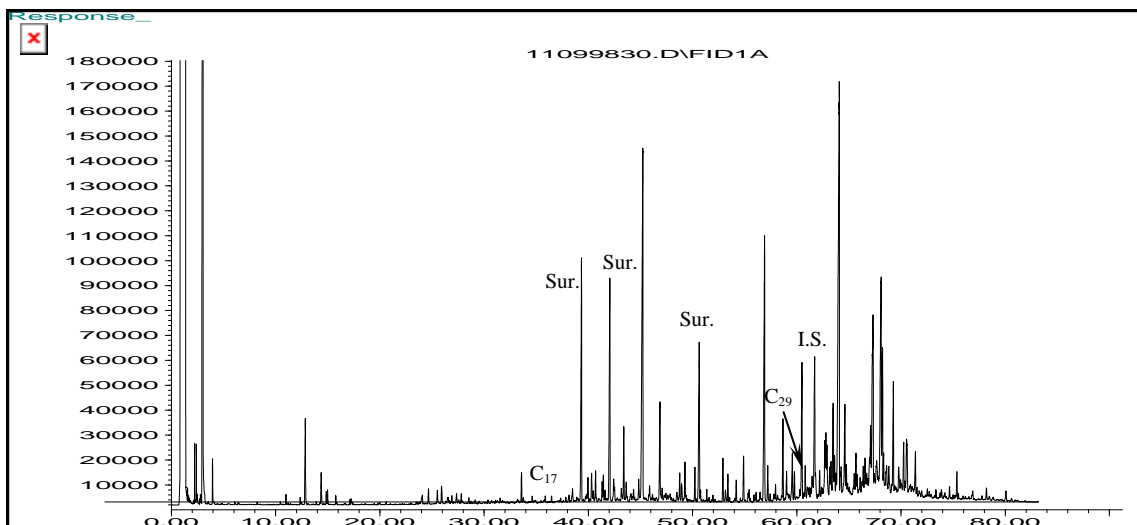
**Figure 3-6: Ninilchik Coal Source Sample Results: GC/FID chromatogram (top), PAH distribution plot (middle), Triterpane extracted ion chromatogram (bottom).**



**Figure 3-7: Matanuska Coal Source Sample Results: GC/FID chromatogram (top), PAH distribution plot (middle), Triterpane extracted ion chromatogram (bottom).**

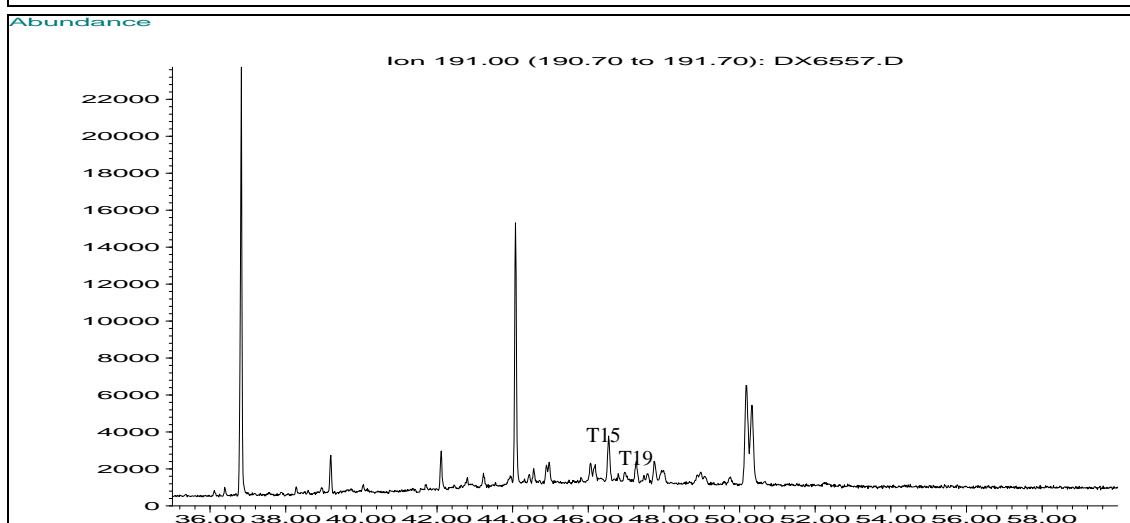
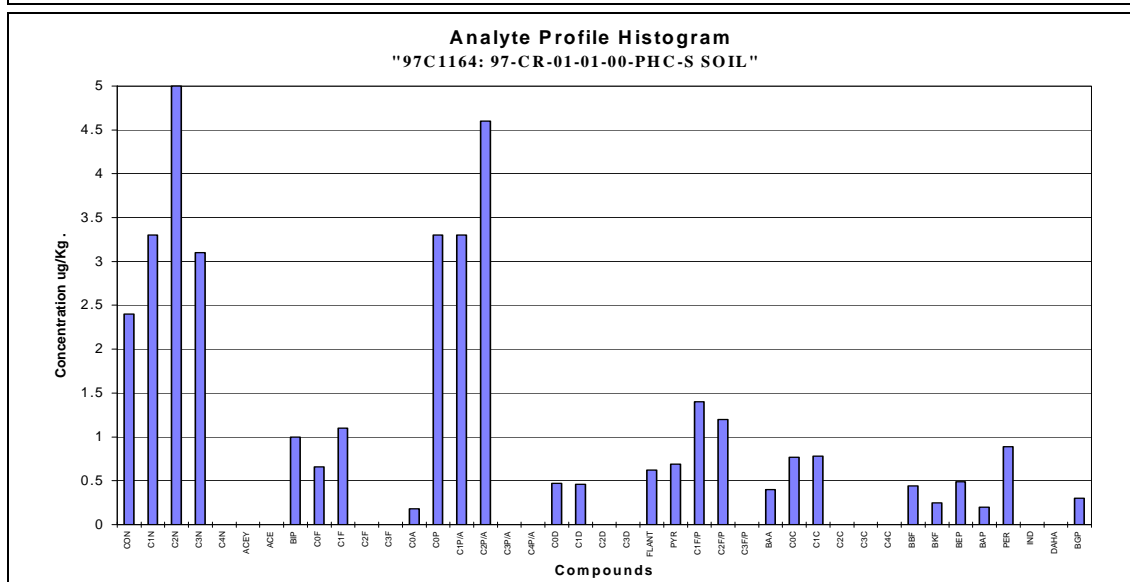
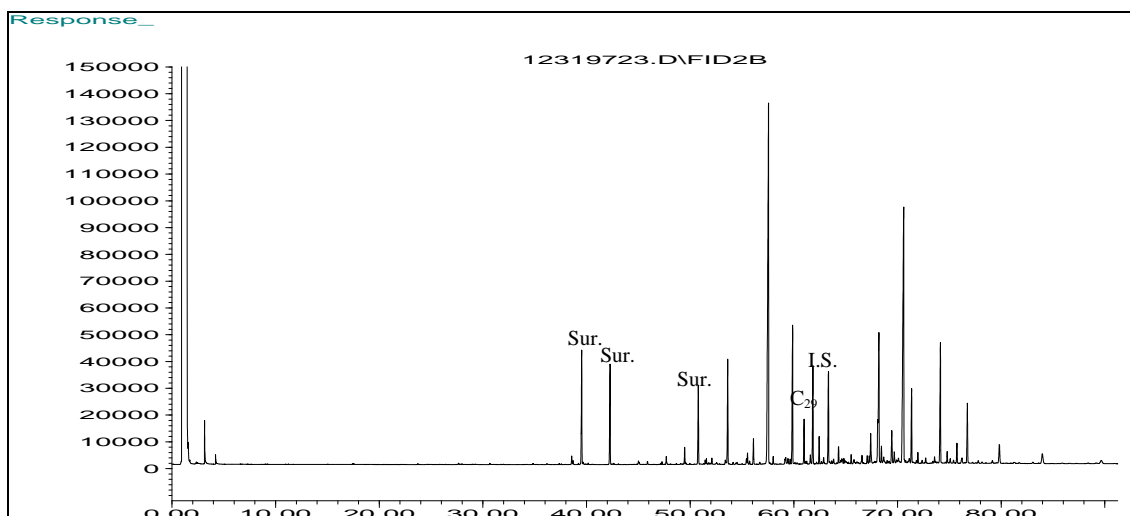






**Figure 3-9: Beluga Coal Source Sample Results: GC/FID chromatogram (top), PAH distribution plot (middle), Triterpane extracted ion chromatogram (bottom).**





**Figure 3-11: Copper River Sediments 0-2 cm Depth Source Sample Results: GC/FID chromatogram (top), PAH distribution plot (middle), Triterpane extracted ion chromatogram (bottom), 1997.**

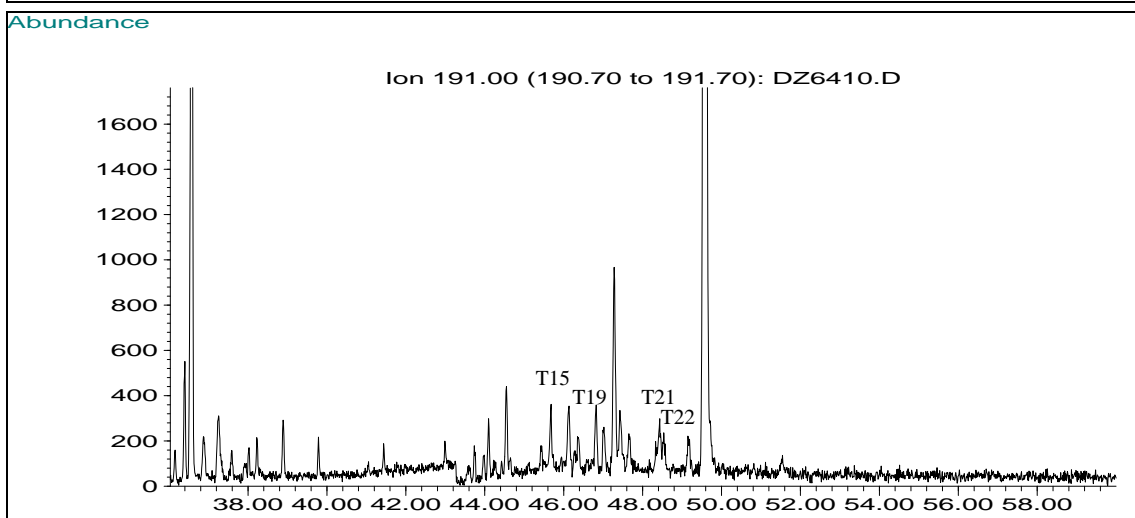
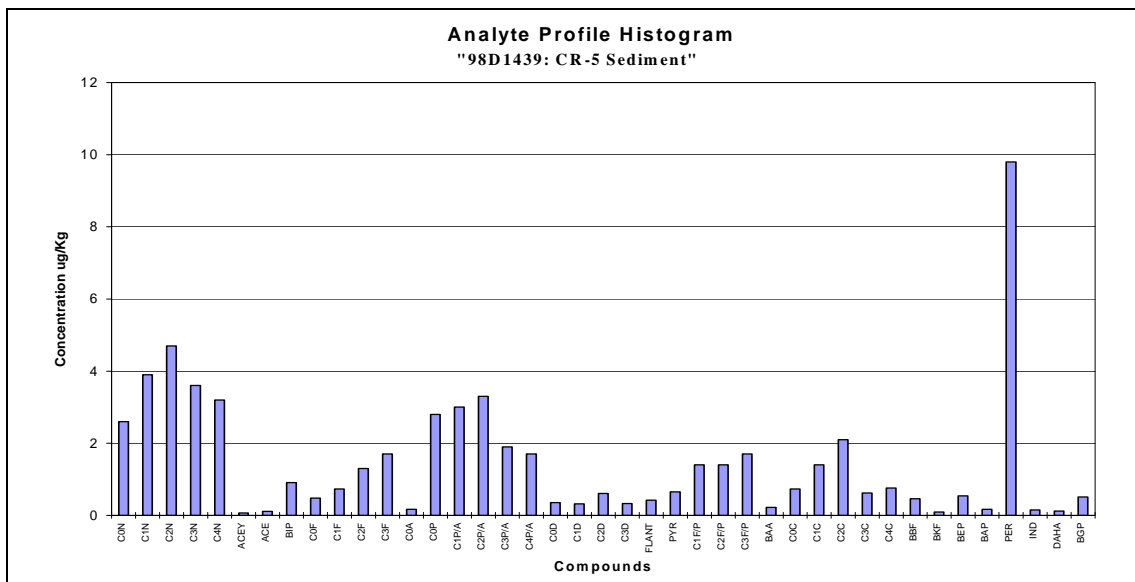
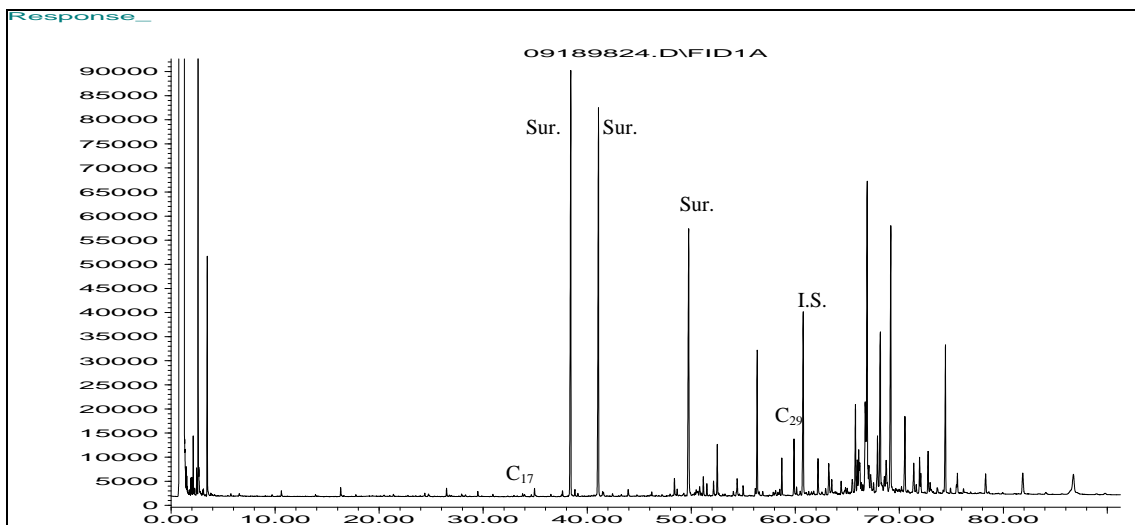
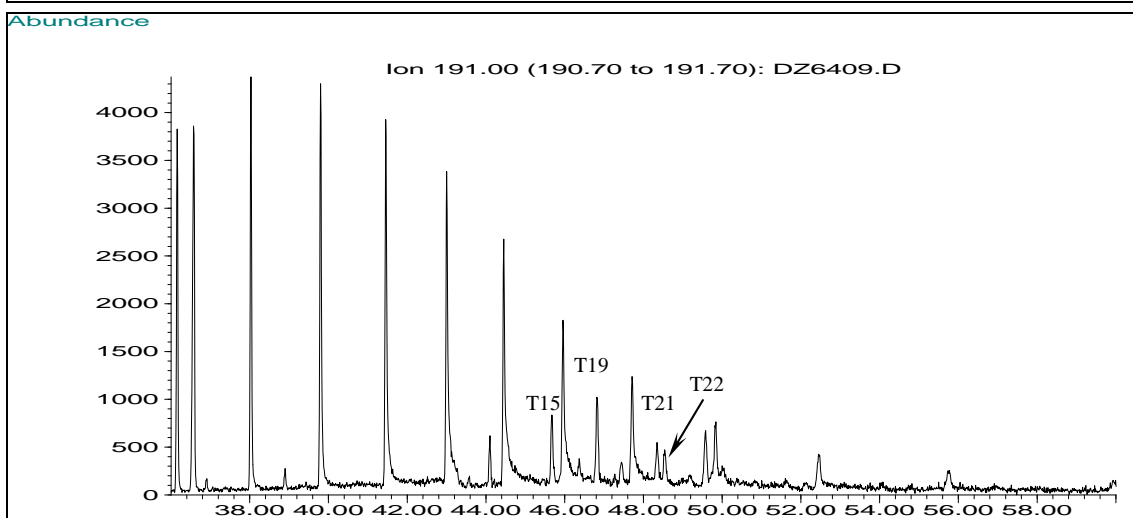
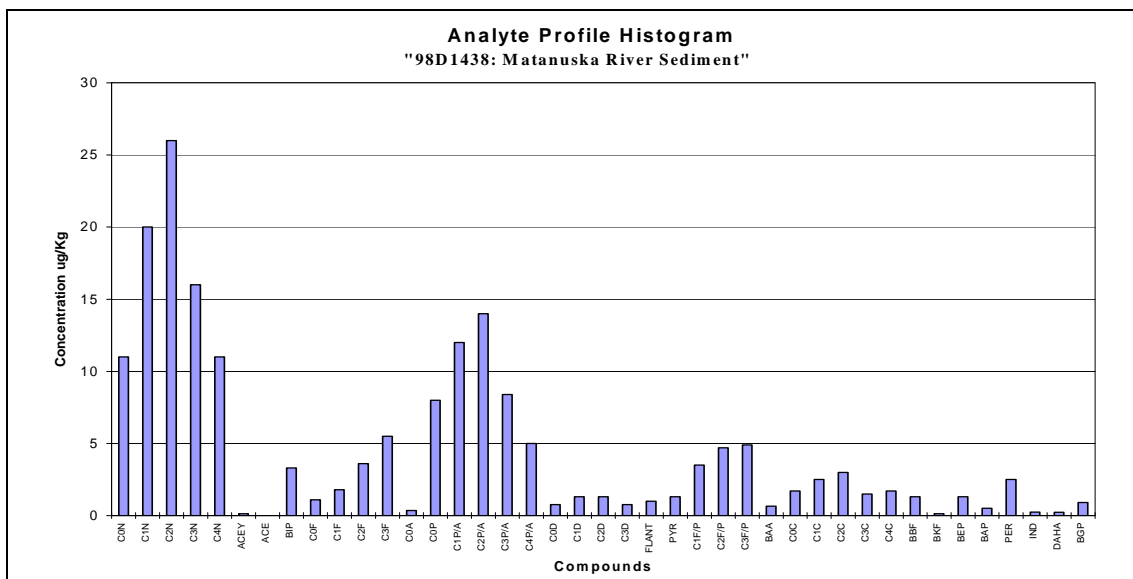
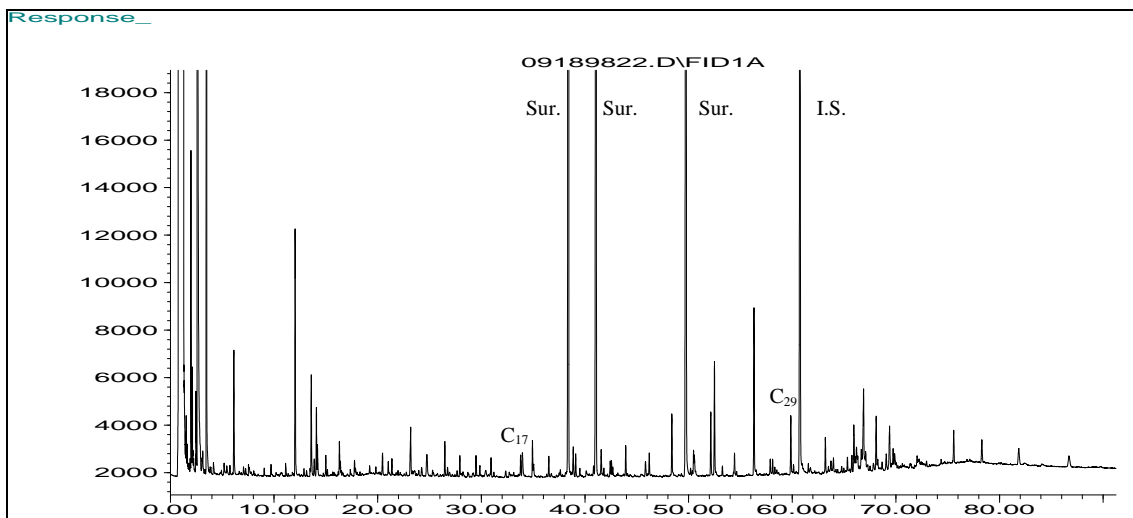


Figure 3-12: 1998 Copper River Sediment Source Sample Results: GC/FID chromatogram (top), PAH distribution plot (middle), Triterpane extracted ion chromatogram (bottom).





**Figure 3-14: Matanuska River Sediment Source Sample Results: GC/FID chromatogram (top), PAH distribution plot (middle), Triterpane extracted ion chromatogram (bottom).**



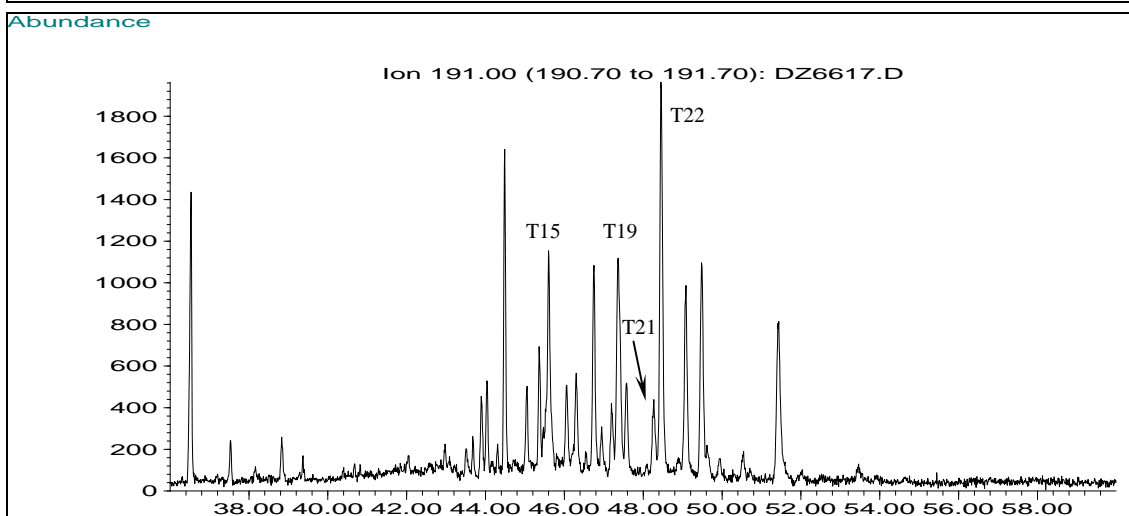
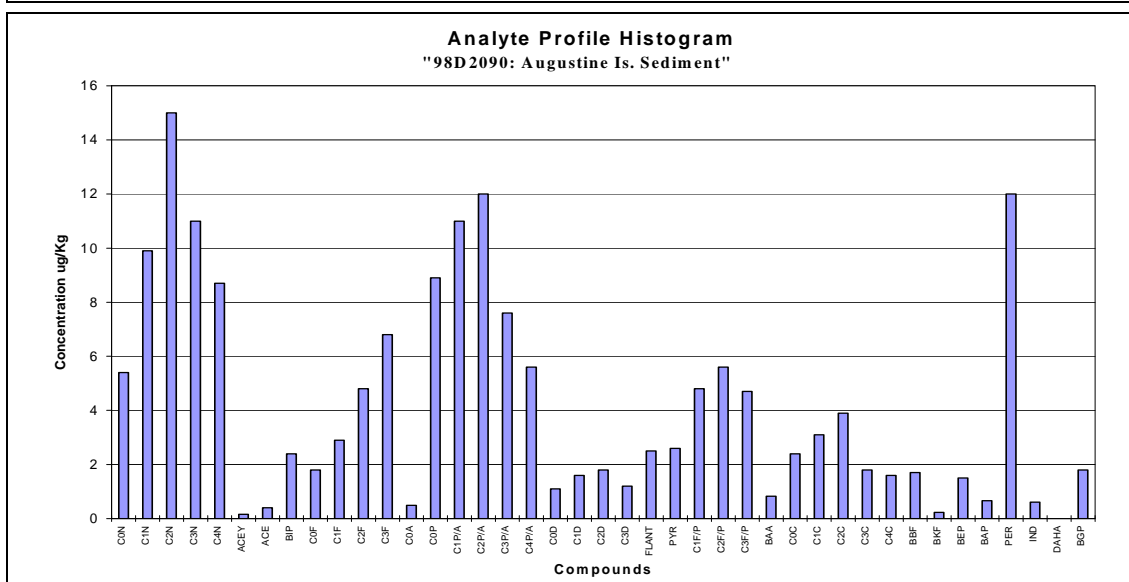
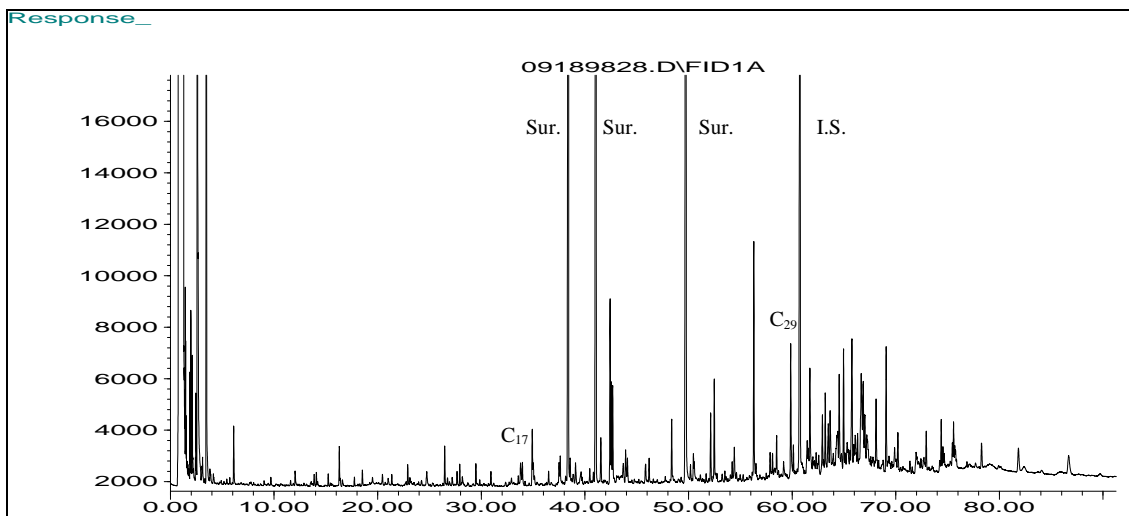
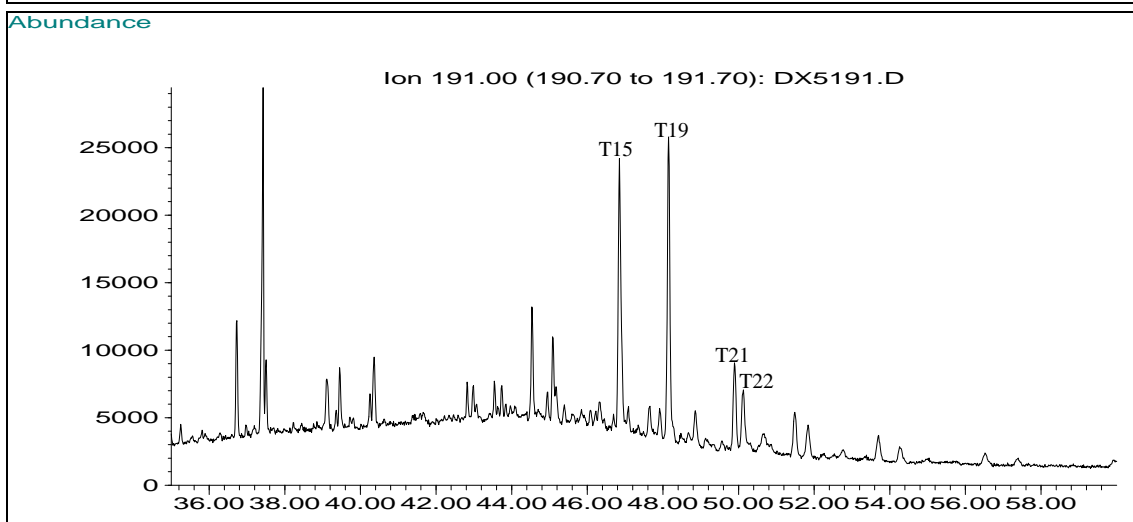
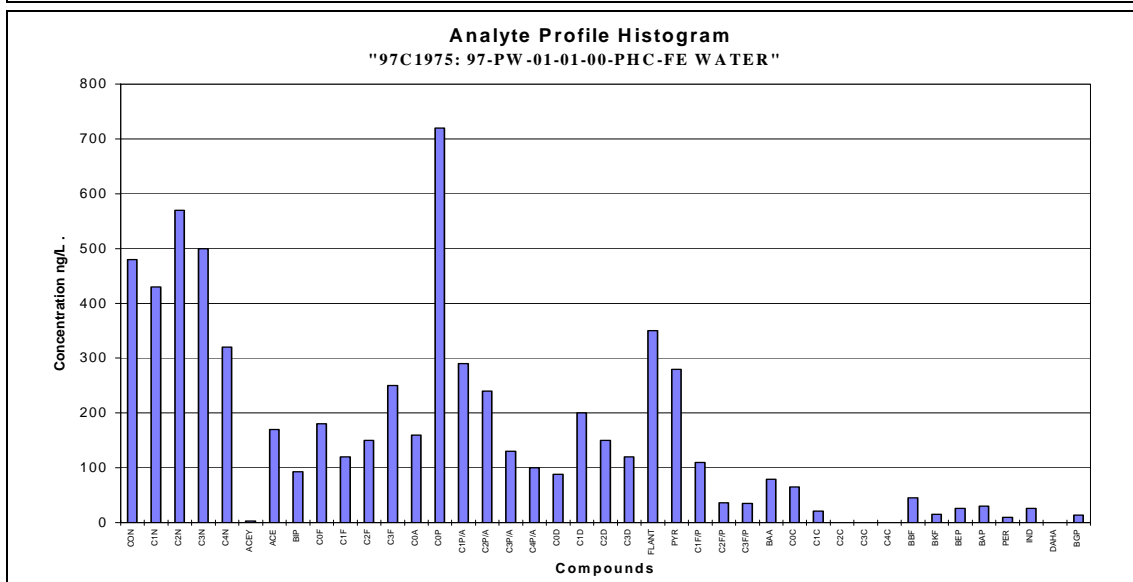
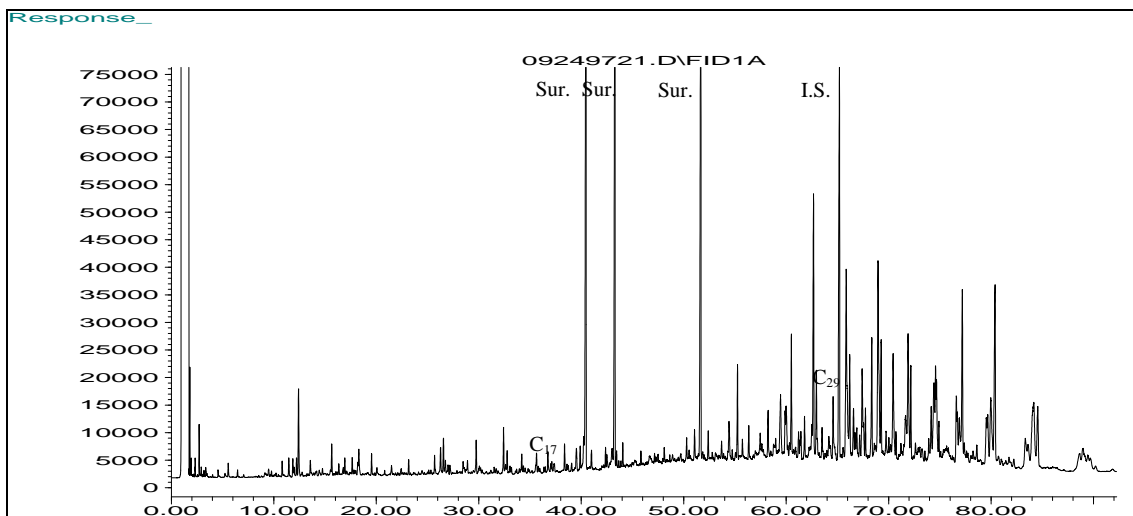
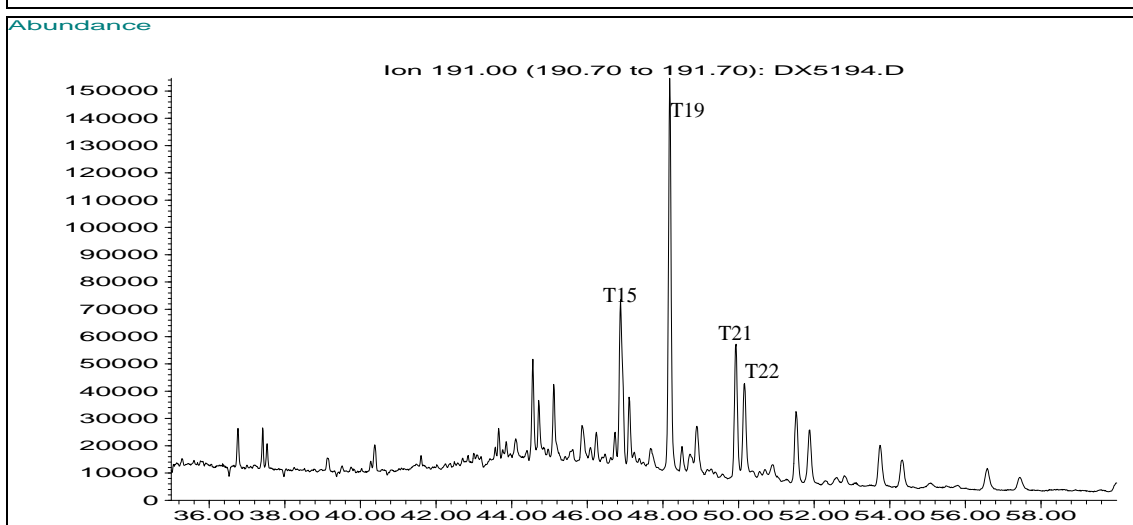
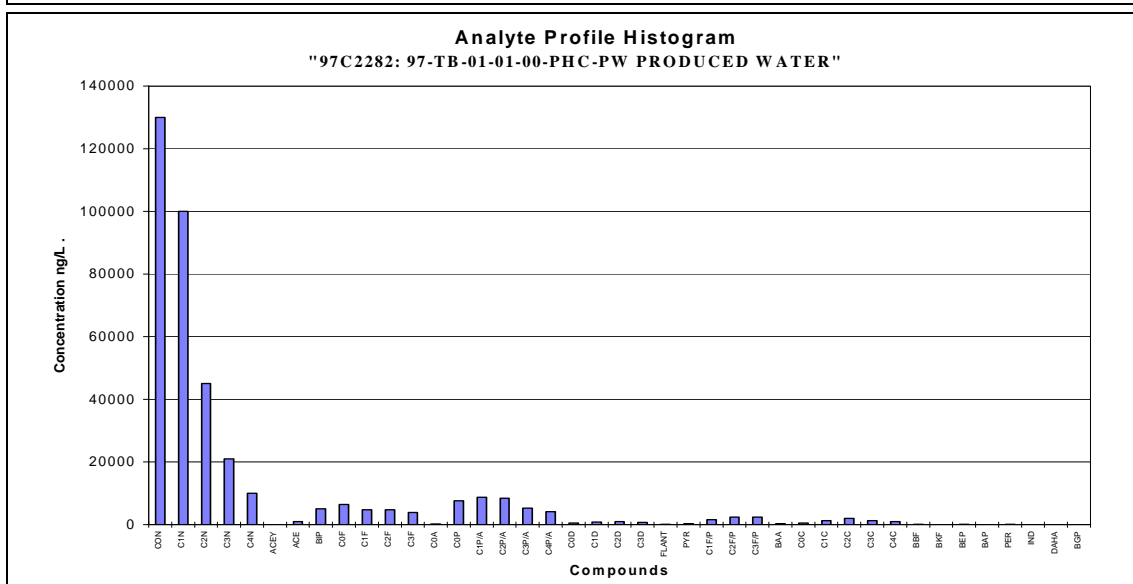
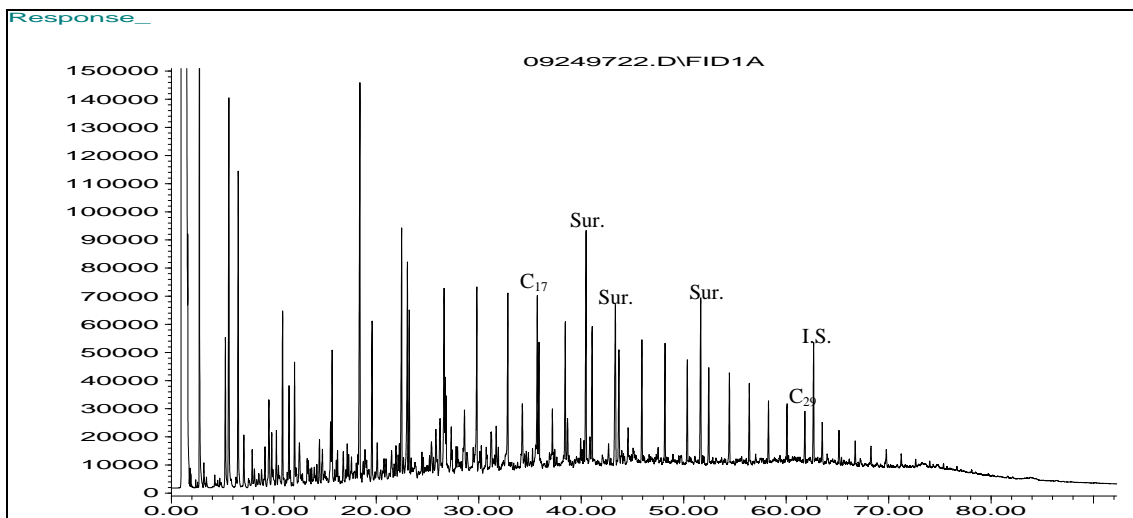


Figure 3-16: St. Augustine Island Sediment Source Sample Results: GC/FID chromatogram (top), PAH distribution plot (middle), Triterpane extracted ion chromatogram (bottom).





**Figure 3-17: Municipal Waste Treatment Facility, Pt. Woronzof Final Effluent Source Sample Results: GC/FID chromatogram (top), PAH distribution plot (middle), Triterpane extracted ion chromatogram (bottom).**



**Figure 3-18: Produced Water TBPF Outfall Source Sample Results: GC/FID chromatogram (top), PAH distribution plot (middle), Triterpane extracted ion chromatogram (bottom).**